

# MURRAY COUNTY.

Section

1

Township

106

Range

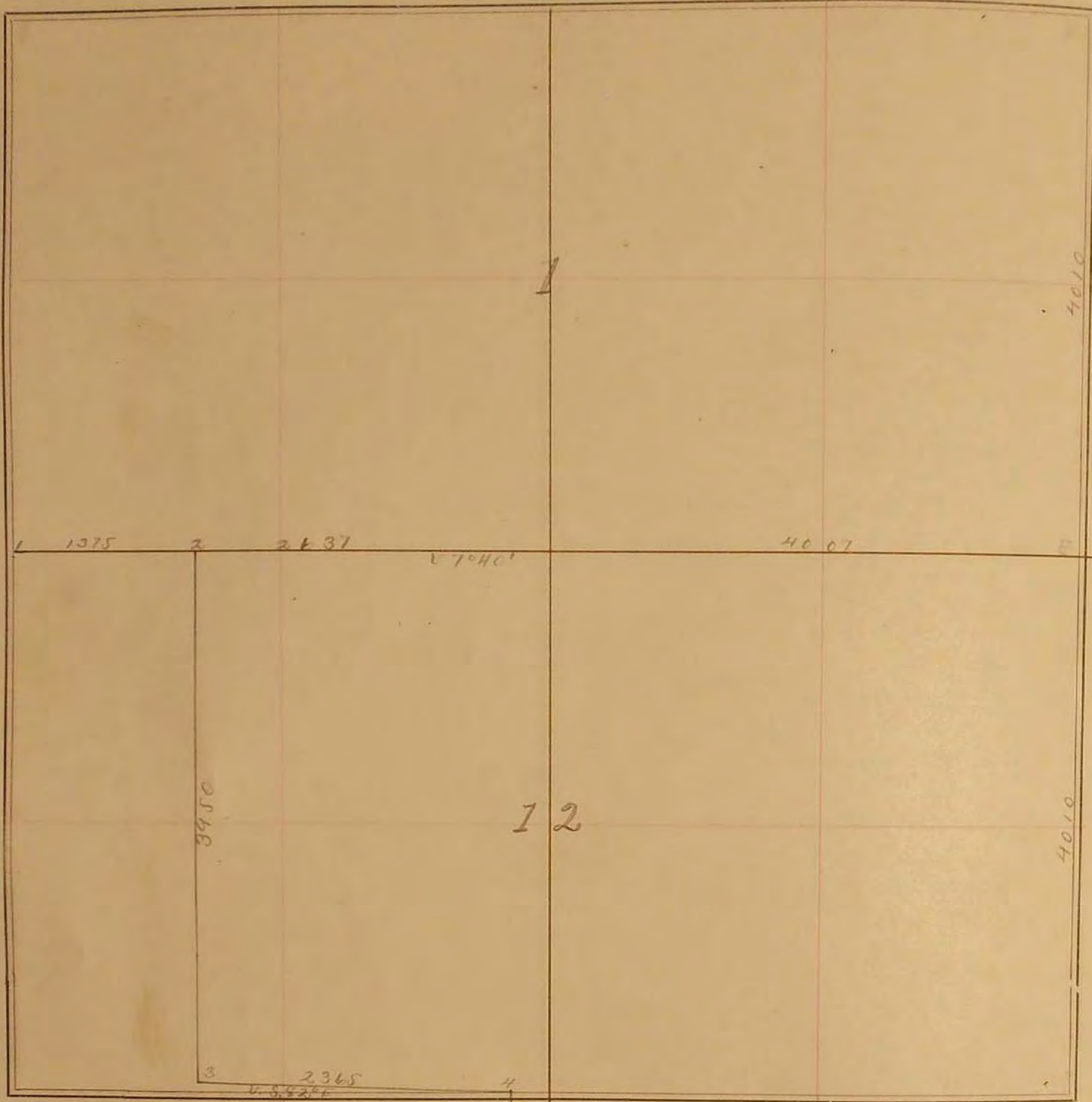
43

10798 McGill-Warner Co., Blank Book Manufacturers, St. Paul.


- 1
- 2
- 3
- 4
- 5
- 6
- 7
- 8
- 9
- 10
- 11
- 12
- 13
- 14
- 15
- 16
- 17
- 18
- 19
- 20
- 21
- 22
- 23
- 24
- 25
- 26
- 27
- 28
- 29
- 30
- 31
- 32
- 33
- 34
- 35
- 36

SURVEY No. 39

Section 1 + 12 Town 106 Range 43



FIELD NOTES.

July 12, 1898,

1. East on sec. line 1375.
2. South (4°35) 3950
3. " 82° East 2365
4. " (9°35) 21, to R.R.
- 5.

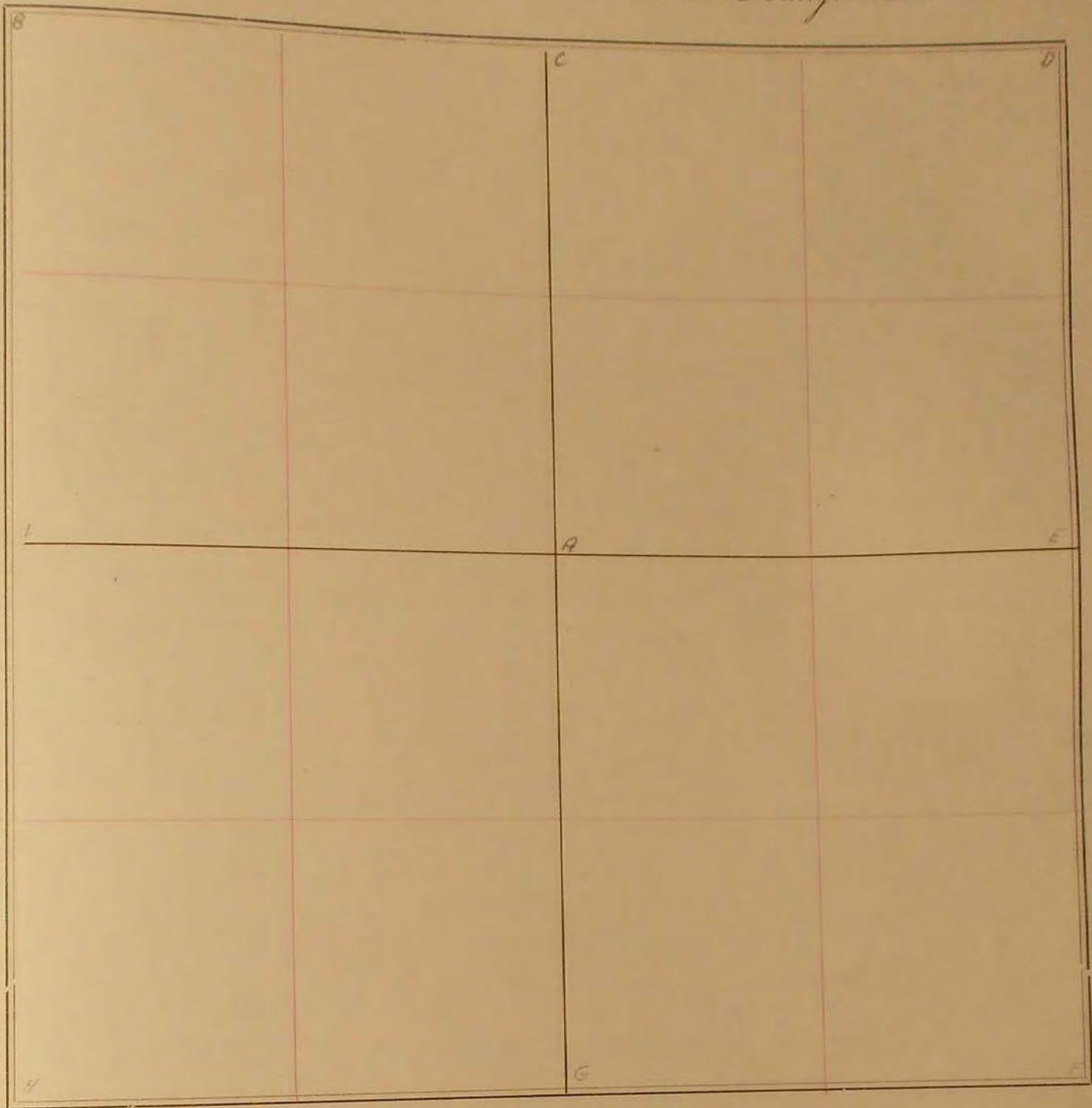
*J.W. Woodlin*

SURVEY No. \_\_\_\_\_

Section 1

Town 106

Range 43



FIELD NOTES.

Dec 20 - 1957 M. Z. Kozman

- A
- B
- C
- D
- E
- F
- G
- H
- I

F Sample 5 feet East of E. at Black Top Road

G Stone Old Corner Underneath A shaped Cement Slab on top of lower slab on west side